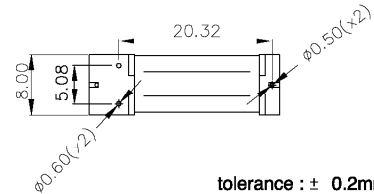
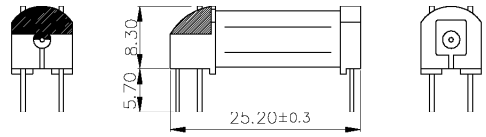


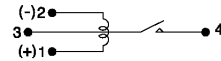
**Features**

1. Small size and light weight offers high density P.C Board technique.
2. Free from dust, humidity, etc. by employment of glass tube sealed reed switch for high reliability contact performance.
3. Switching capacity form dry circuit use 1A selectable to comply with wide applications.
4. Fast response time in addition to short bouncing time to application associated with semiconductors like transistors, I.C.'s.

**Outside Dimension: Unit (mm)**



**Schematic: Top View**



**Absolute Maximum Ratings**

(AT=20°C)

COIL RATINGS	Rating	Unit
Coil resistance	1050	Ω (± 10%)
Nominal coil voltage	12	VDC
Maximun Continuous voltae	19.2	VDC
Must operate	8.4	VDC
Must release	1.2	VDC
Rated current	11.4	mA

ELECTRONCAL CHARACTERISTICS	Rating	Unit
Contact resistance	150	mΩ (max)
Operate time	1.0	ms (max)
Bounce time	0.5	ms (max)
Release time	0.5	ms (max)
Insulation resistance (100 VDC open contact)	10 <sup>9</sup>	Ω (min)
(between coil & contact 500VDC)	10 <sup>8</sup>	Ω (min)
Power	10	VA (max)
Switching voltage	100	VDC (max)
Switching current	0.5	A (max)
Carry current	1.0	A (max)
Breakdown voltage (across open contact)	200	VDC (1sec)
(between coil & contact)	3000	VDC (1sec)
Life expectancy (6V, 10mA)	10 <sup>7</sup>	
Temperature Range	-30 to 60	°C
Humidity Range	-45 to 85%	RH.
Shock Endurance	100	G (min)
Shock Error Operation	13	G (min)
Vibration Endurance	10 to 55	Hz Double Amplitude 1.5mm
Vibration Error Operation	10 to 55	Hz Double Amplitude 1.5mm
Minimun permissible load		1VDC, 1mA